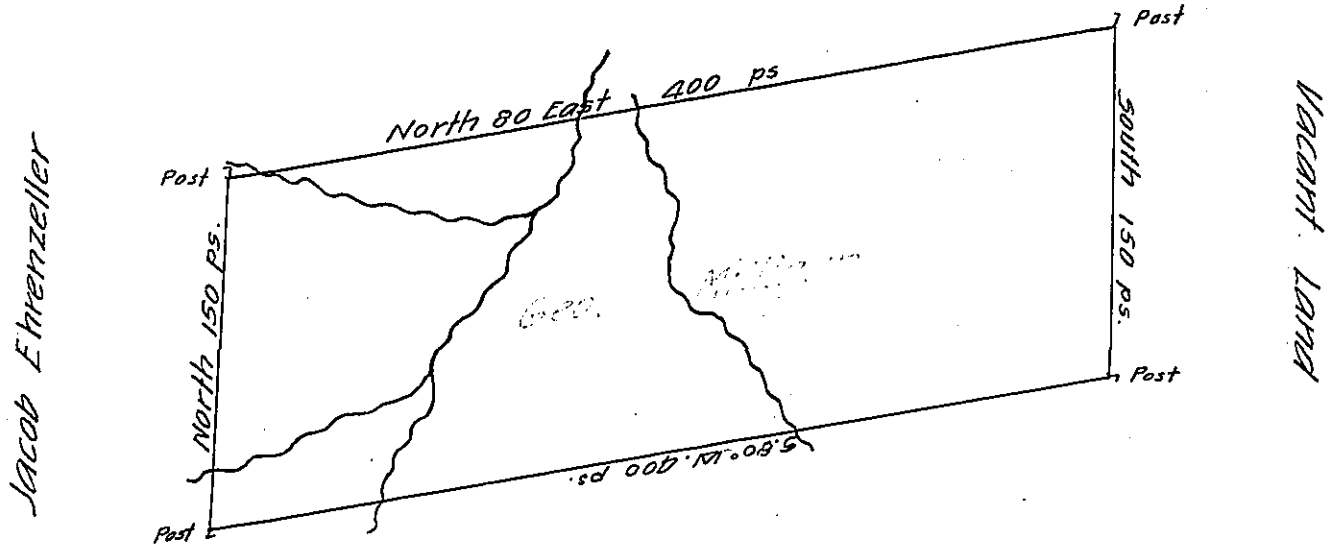


A-3-98  
C-72-97  
Alexander Edwards Land



Wm. Simpson's Land  
C-69-270

In pursuance of an order No. 2498, dated the 20<sup>th</sup> day of January 1767. surveyed the 3<sup>d</sup> day of June 1767 for George Milligan (also Millison.) the above described Tract of Land situate between Savage River and Laurel Run on the Waters of Potomack - in the County of Cumberland containing Three hundred and thirty acres and three quarters and the usual allowance of six acres p. ct. for Roads & ca.

p. Richard Tea. Depl. survey<sup>r</sup>

To John Lukens Esq<sup>r</sup> }  
 survey<sup>r</sup> General }

IN TESTIMONY that the above is a copy of the original remaining on file in the Department of Internal Affairs of Pennsylvania, made conformably to an Act of Assembly approved the 16th day of February, 1833, I have hereunto set my Hand and caused the Seal of said Department to be affixed at Harrisburg, this fifteenth day of September 1905

*Isaac R. Brown*  
 Secretary of Internal Affairs.